

# Series 3 Technician's Installation and Service Training Manual

## 821 Through Traffic Light Control with Advance Warning of Door Closure

Series 3 Technician's Installation and Service Training Manual  
821 with Advance Warning of Door Closure



**Warning Electrical Shock Hazard**  
To prevent serious injury or death always ensure power is disconnected when wiring anything into the ZAP Controller.

**Materials Needed**

Appropriate operator for door size. (See Brochure)  
821 ,16-20 awg 4 conductor cable, 16-20 awg 1 conductor cable, 115V-208-230V Red Green Traffic Light, 115V Revolving warning light, or 115V audible warning device.

Isolate the power supply before wiring any device into a ZAP Controller.

The 821 is designed to function similarly to the 82-TLM with exception of the 821 being able to provide advance warning if pending door closure.

For door closed interlock function consult the Door closed interlock wiring page for the 82-TLM.

For through traffic light wiring consult the through traffic light wiring page for the 82-TLM.

For interlocking 2 doors in the closed (Sally Port) configuration consult the interlocking 2 doors in the closed (Sally Port) configuration page.

**115V, 208-230V revolving warning light or audible warning device wiring**

Ensure light or audible warning device is same voltage as the power supply provided to ZAP controller.

Wire the light or audible warning device primary wire to the red light connection on DTLM. (Figure A)

Wire the light or audible warning device common wire to the Neutral mains connection the ZAP Control board. (Figure B)

Wire the light or audible warning device ground wire to the ground connection the ZAP Control board. (Figure C)

Wire the warn terminal on the 821 (Figure A) to the start warning terminal on TB7 on the ZAP Control board. (Figure D)

Set the flash DIP Switch to Off. Set the function DIP Switch to On.

Carefully align the 82-TLM socket connector with the 10 Pin socket connector on the main controller board and plug the 82-DTLM onto the 10 pin connector. (Figure E)

Ensure the socket connector is fully seated (Figure F)

Restore the power supply to the operator and test.

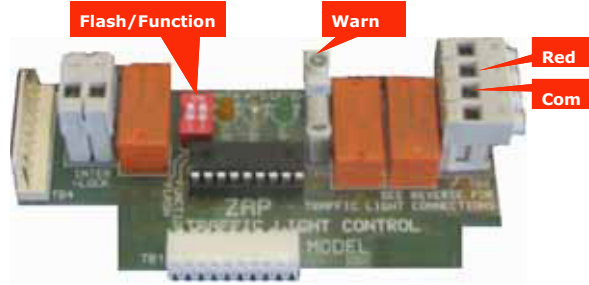


Figure A

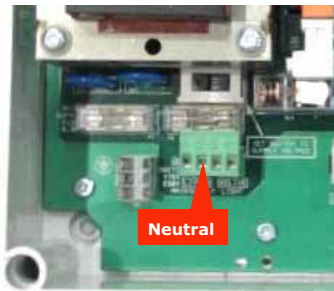


Figure B

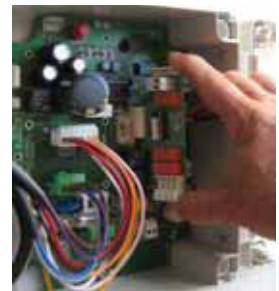


Figure E

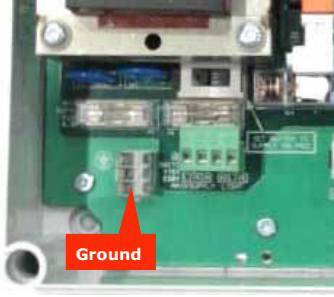


Figure C



Figure F

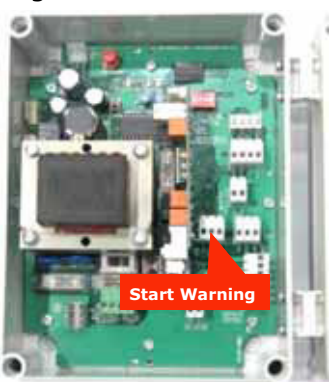


Figure D

**ZAP Series 3  
Simply Logical**

ZAP Controls  
100 Waterloo Blvd. Anglesey Business Park, Littleworth Road, Cannock, Staffordshire, England  
UK Contact 011-44-154-387-9444 sales@zap-uk.com  
USA Contact 931-510-4432 sales@zap-america.com  
USA Tech Support 931-510-4432 via telephone or text  
Online www.zap-uk.com

Series 3 821 with Advance warning of Door Closure