

# Series 3 Technician's Installation and Service Training Manual

## Single Contact Device to Cause Cyclic Operation



**Warning Electrical Shock Hazard**  
 To prevent serious injury or death always ensure power is disconnected when wiring anything into the ZAP Controller.

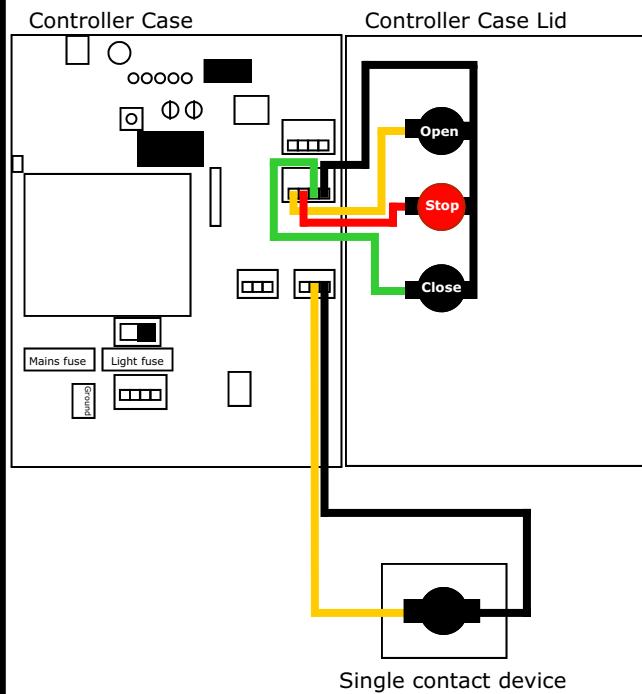
**Materials Needed**  
 16-20 awg 2 conductor cable, Single contact device such as a Single Button wall station, microwave sensor, loop detector, treadle, SPST Ceiling Pull, etc.

**Note:** This function will cause a cyclic operation. It will open with the first input. If it receives another input before reaching the fully open position it will stop, after stopping another input will cause a close function.

Isolate the power supply before wiring any device into a ZAP Controller.

Using your 2 wire cable, insert one wire into the Radio position of TB9 and terminate it into one side of the one button station. (red wire diagram)

Next, insert the other wire into the 0V position of TB9 and terminate it into the other side of the one button station. (black wire diagram)



Series 3 Technician's Installation and Service Training Manual  
 Additional One Button Wall Station on 3 button controllers

Series 3 Additional One Button Wall Station on 3 button controllers

### ZAP Series 3 Simply Logical

ZAP Controls  
 100 Waterloo Blvd. Anglesey Business Park, Littleworth Road, Cannock, Staffordshire, England  
 UK Contact 011-44-154-387-9444 sales@zap-uk.com  
 USA Contact 931-510-4432 sales@zap-america.com  
 USA Tech Support 931-510-4432 via telephone or text  
 Online www.zap-uk.com