

# Series 3 Technician's Installation and Service Training Manual

## Door Closed Interlock



**Warning Electrical Shock Hazard**  
To prevent serious injury or death always ensure power is disconnected when wiring anything into the ZAP Controller.

Materials required  
82-TLM , 16-20 awg 2 conductor cable  
Tools required  
Small technicians screwdriver.

Isolate the power supply before wiring any device into a ZAP Controller.

The 82-TLM provides a pair of contacts that close when the door has reached the fully closed position.

The common terminal of the device to be interlocked is wired and terminated into one of the terminals labeled Common on the 82-TLM. (Figure A.)

The contact terminal of the device to be interlocked is wired and terminated into the other terminal labeled Interlock on the 82-TLM. (Figure A.)

Carefully align the 82-TLM socket connector with the 10 Pin socket connector on the main controller board and plug the 82-TLM onto the 10 pin connector as shown. (Figure B)

Ensure the socket connector is fully seated as shown. (Figure C)

Restore the power supply to the operator.



Figure A

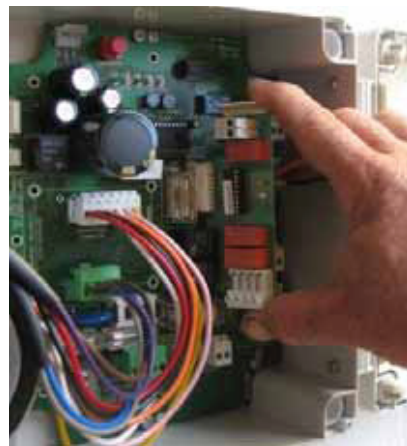


Figure B



Figure C

### ZAP Series 3 Simply Logical

ZAP Controls  
100 Waterloo Blvd. Anglesey Business Park, Littleworth Road, Cannock, Staffordshire, England  
UK Contact 011-44-154-387-9444 sales@zap-uk.com  
USA Contact 931-510-4432 sales@zap-america.com  
USA Tech Support 931-510-4432 via telephone or text  
Online www.zap-uk.com